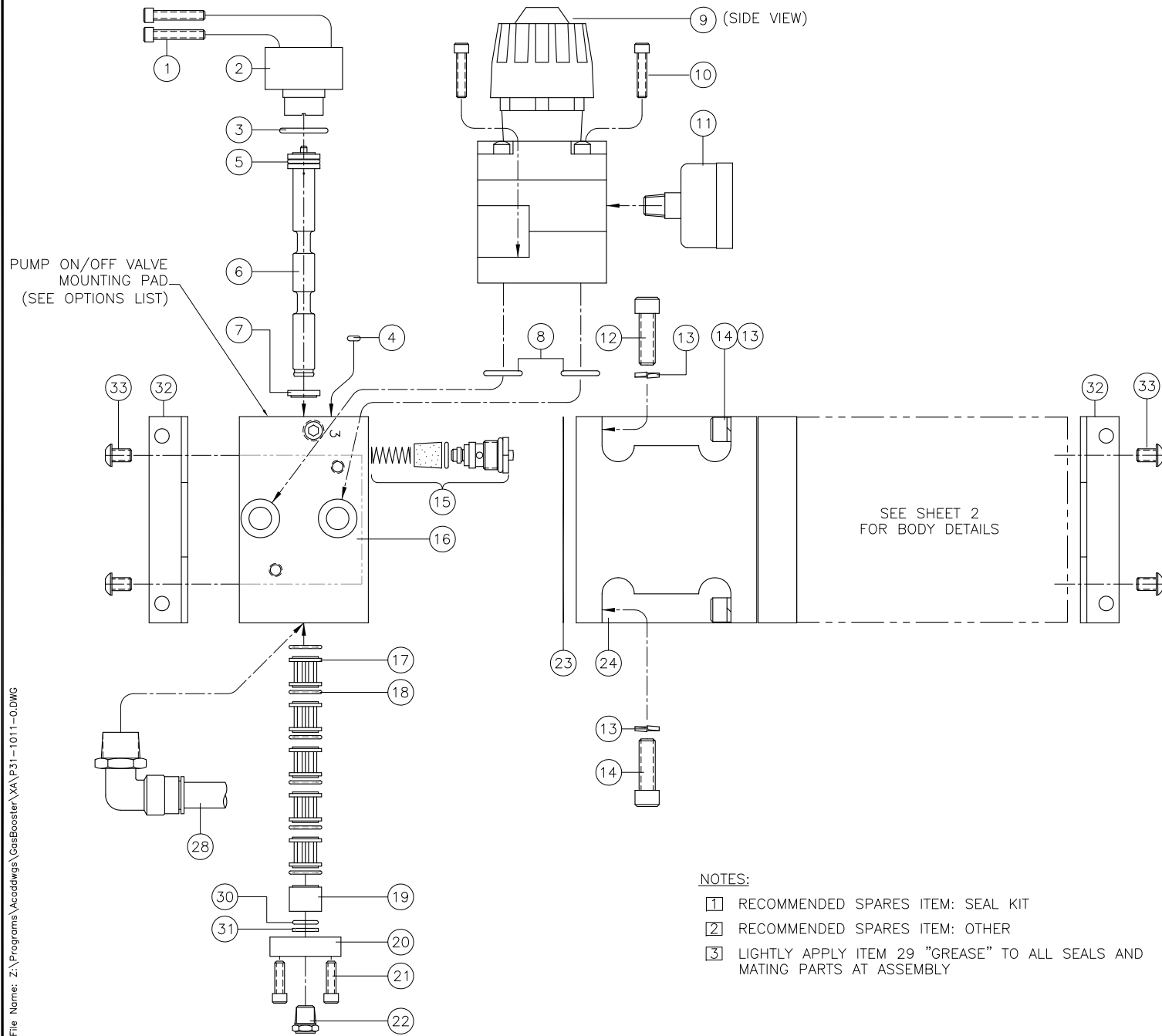


File Name: Z:\Programs\Acaddwgs\GasBooster\XA\P31-1011-0.DWG



NOTES:

- 1 RECOMMENDED SPARES ITEM: SEAL KIT
- 2 RECOMMENDED SPARES ITEM: OTHER
- 3 LIGHTLY APPLY ITEM 29 "GREASE" TO ALL SEALS AND MATING PARTS AT ASSEMBLY

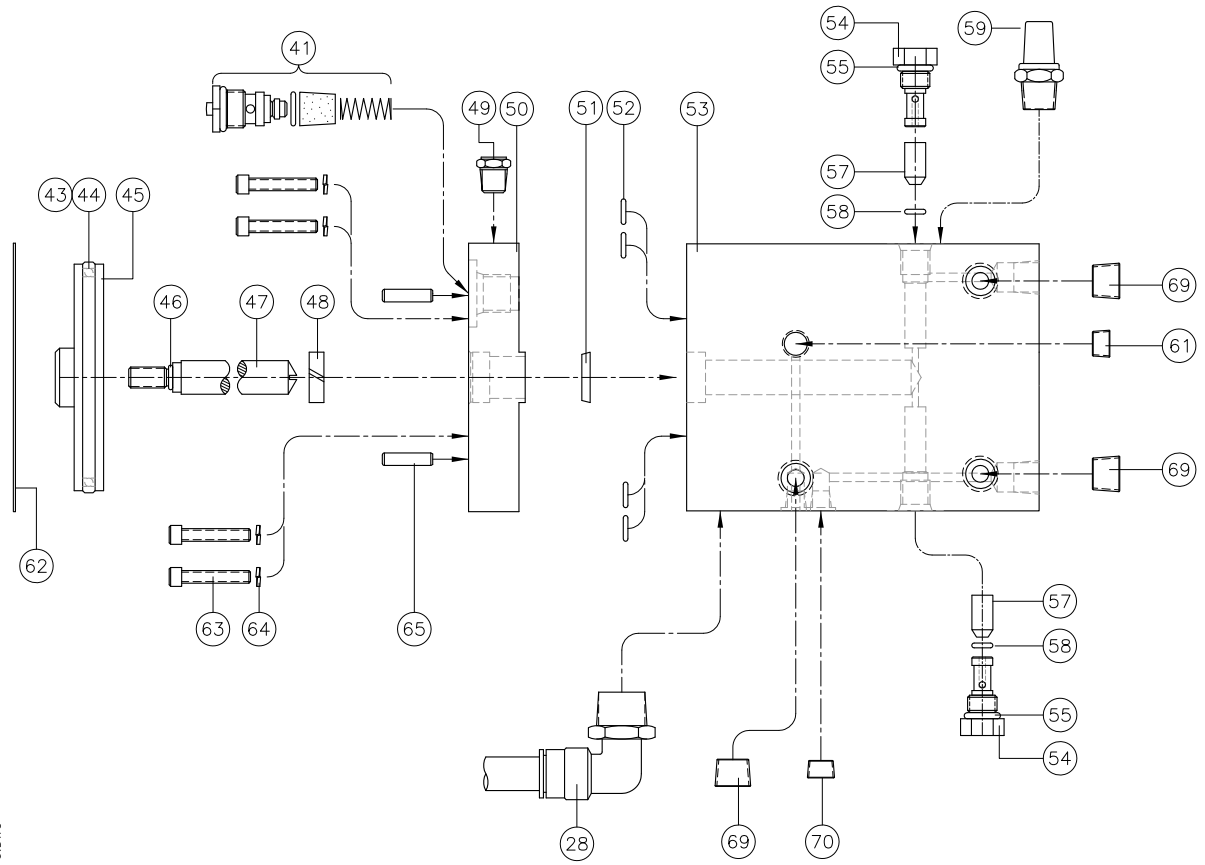
REV	DESCRIPTION	BY	DATE
-	-	-	-

40			
39			
38			
37			
36			
35			
34			
33	4	1/4-20 x .38	SCREW, BUT HD CAP
32	2	10262 P00-5801	BRACKET, MOUNTING
31	1	11753	TEFLON BU RING, -.012
30	1	SO-012P7	O-RING
29	A/R		GREASE, WHT LITHIUM
28	1	12061 M04-1025	HOSE ASSY
27			
26			
25			
24	1	10111 P12-5202	BODY, AIR CYLINDER
23	1	10334 P00-5205	GASKET, AIR BODY
22	1	10264	BREATHER, 1/8 NPT
21	2	10-24 x .62	SCREW, SOC HD CAP
20	1	10299 P00-5208	SPOOL CAP
19	1	10269 P00-5210	BUSHING, LONG
18	6	10629	TEE SEAL
17	5	10273 P00-5209	CAGE
16	1	10004 P12-5201	AIR CAP HOUSING
15	1	10017 V04-1005	2-WAY AIR VLV ASSY
14	4	5/16-18 x 1.75	SCREW, SOC HD CAP
13	8	10393	LOCK WASHER, 5/16 HI C
12	4	5/16-18 x 1.00	SCREW, SOC HD CAP
11	1	10342 M04-1004	AIR GAUGE (0-160 PSI)
10	2	1/4-20 x .88	SCREW, SOC HD CAP
9	1	10015 P12-1202	AIR REG ASSY
8	2	SO-016B7	O-RING
7	1	10271 P00-5212	BUSHING, SHORT
6	1	10659 P00-5211	AIR SPOOL
5	1	SO-111B7	O-RING
4	1	SO-006B7	O-RING
3	1	SO-019B7	O-RING
2	1	10298 P00-5207	PILOT CAP
1	2	10-24 x 1.00	SCREW, SOC HD CAP

ITEM	QTY	PART NUMBER	DESCRIPTION
			INTERFACE DEVICES, INC. 230 DEPOT ROAD MILFORD, CT 06460

SCALE: 1/2	TITLE: ASSEMBLY, GAS BOOSTER ENB-20, 30 & 45
DWN BY: WNI	REF:
DATE: 1/23/14	REF:
SHT: 1 OF: 2	DWG NO: P31-1011
	REV: -

REV	DESCRIPTION	BY	DATE
-	-	-	-



NOTES:

- 1 RECOMMENDED SPARES ITEM: SEAL KIT
- 2 RECOMMENDED SPARES ITEM: OTHER
- 3 LIGHTLY APPLY ITEM 29 "GREASE" TO ALL SEALS AND MATING PARTS AT ASSEMBLY

PUMP RATIO	ITEM 47 PISTON	ITEM 48 SLYDRING	ITEM 50 RATIOPLATE	ITEM 51 VARISEAL	ITEM 53 AIR BODY
20:1	11904 P31-5510	10647 M03-1031	11096 P31-5401	11601 M03-1008	11095 P31-5602
30:1	12669 P31-5512	10645 M03-1031	11686 P31-5405	10886 M03-1008	11098 P31-5601
45:1	11906 P32-5502	10369 M03-1031	10553 P32-5401	11597 M03-1008	10116 P32-5601

70	2	12280	PIPE PLUG, 1/16 NPT, BRSS
69	3	12095	PIPE PLUG, 1/4 NPT, BRSS
68			
67			
66			
65	2	11772	DOWEL PIN, #3/16 x .62
64	4	10392	LOCK WASHER, 1/4 HI C
63	4	1/4-20 x 1.00	SOC HD CAP SCR
1	62	10334 P00-5205	GASKET, AIR BODY
61	1	12035	PIPE PLUG, 1/8 NPT, BRSS
60			
59	2	10429	MUFFLER, 1/4 NPT
1	58	SO-008P9	O-RING
2	57	11632 M04-1002	CHECK VALVE (2201)
56			
1	55	SO-012P9	O-RING
54	2	11288 P32-5602	PLUG, CV RETAINER
53	1	SEE CHART	BODY, ENB-45
1	52	SO-011B7	O-RING
1	51	SEE CHART	VARISEAL
50	1	SEE CHART	RATIO PLATE
49	2	10264	BREATHER, 1/8 NPT
2	48	SEE CHART	SLYDRING
47	1	SEE CHART	PISTON ROD
46	1	SO-902B7	O-RING
45	1	11167 P09-5201	AIR PISTON
44	1	10377	GLYDE RING
1	43	SO-233B7	O-RING
42			
2	41	10017 V04-1005	2-WAY AIR VLV ASSY

ITEM	QTY	PART NUMBER	DESCRIPTION
INTERFACE DEVICES, INC. 230 DEPOT ROAD MILFORD, CT 06460			
SCALE: 1/2		TITLE: ASSEMBLY, GAS BOOSTER ENB-20, 30 & 45	
DWN BY: WNI		REF:	
DATE: 1/23/14		REF:	
SHT: 2 OF: 2		DWG NO: P31-1011	REV: -