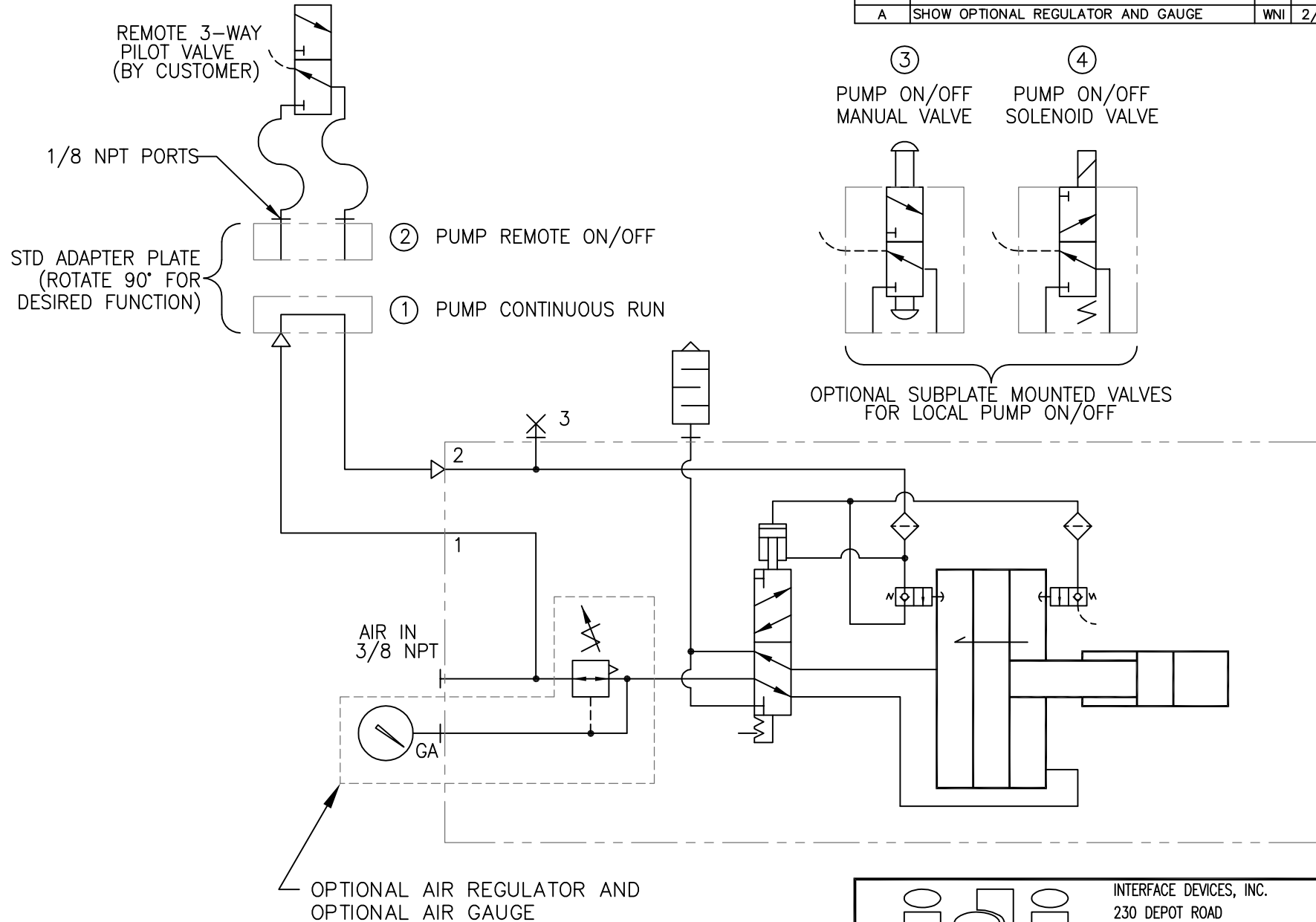

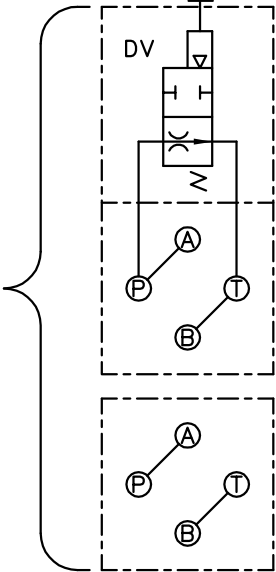
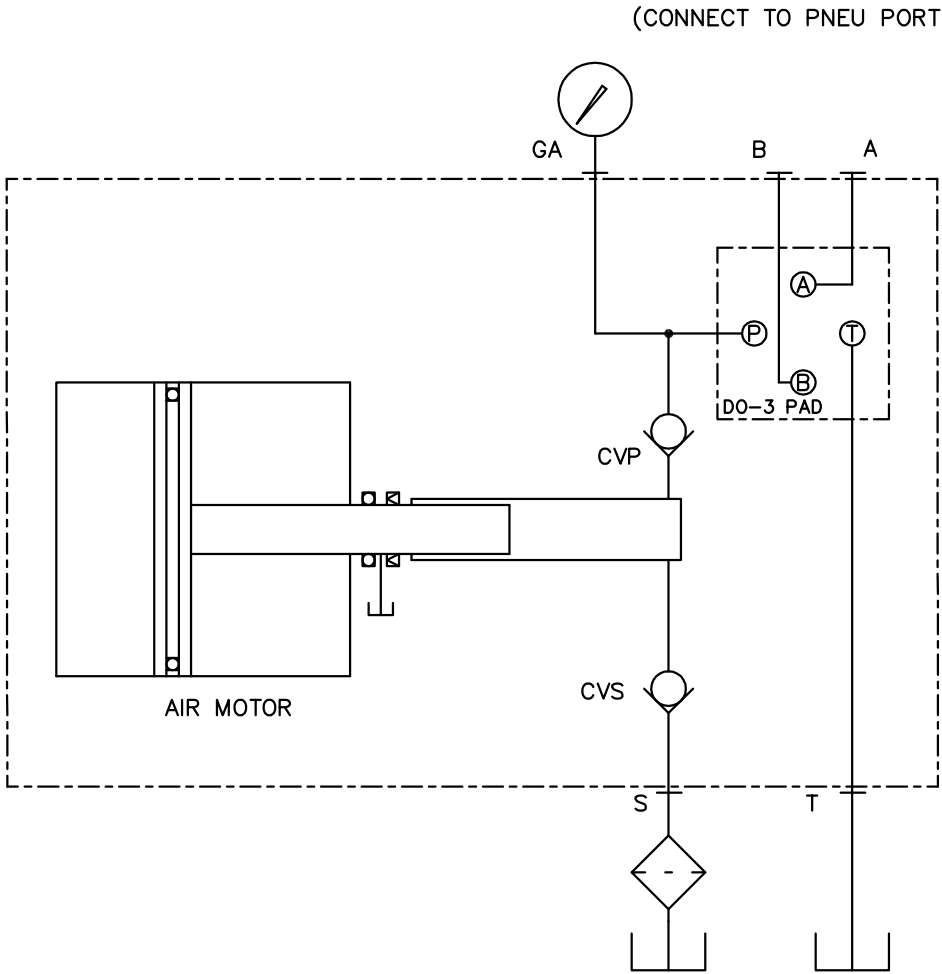


REV	DESCRIPTION	BY	DATE
A	SHOW OPTIONAL REGULATOR AND GAUGE	WNI	2/7/05




		INTERFACE DEVICES, INC. 230 DEPOT ROAD MILFORD, CT 06460	
SCALE: N/A	TITLE: PNEUMATIC SCHEMATIC, TASQ SERIES PUMP		
DWN BY: WNI	REF: UNBALANCED SPOOL		
DATE: 8/13/04	DWG NO: P09-4002		REV: A
SHT: 1 OF: 1			

STANDARD PAD OPTIONS
IF DIRECTIONAL VALVE IS
NOT USED



② CROSS OVER PLATE WITH
APO N.O. DUMP VALVE
(USED IN CONJUNCTION
WITH PUMP ON/OFF VALVE
FOR 3-WAY FUNCTION)

① CROSS OVER PLATE
(USE A PORT FOR PRESSURE
AND B PORT FOR TANK)

		INTERFACE DEVICES, INC. 230 DEPOT ROAD MILFORD, CT 06460	
SCALE: N/A	TITLE: HYDRAULIC SCHEMATIC TASQ SERIES PUMP		
DWN BY: TWH	REF:		
DATE: 2/26/03	REF:		
SHT: 1 OF: 1	DWG NO: P09-3001	REV: —	