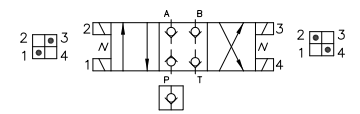
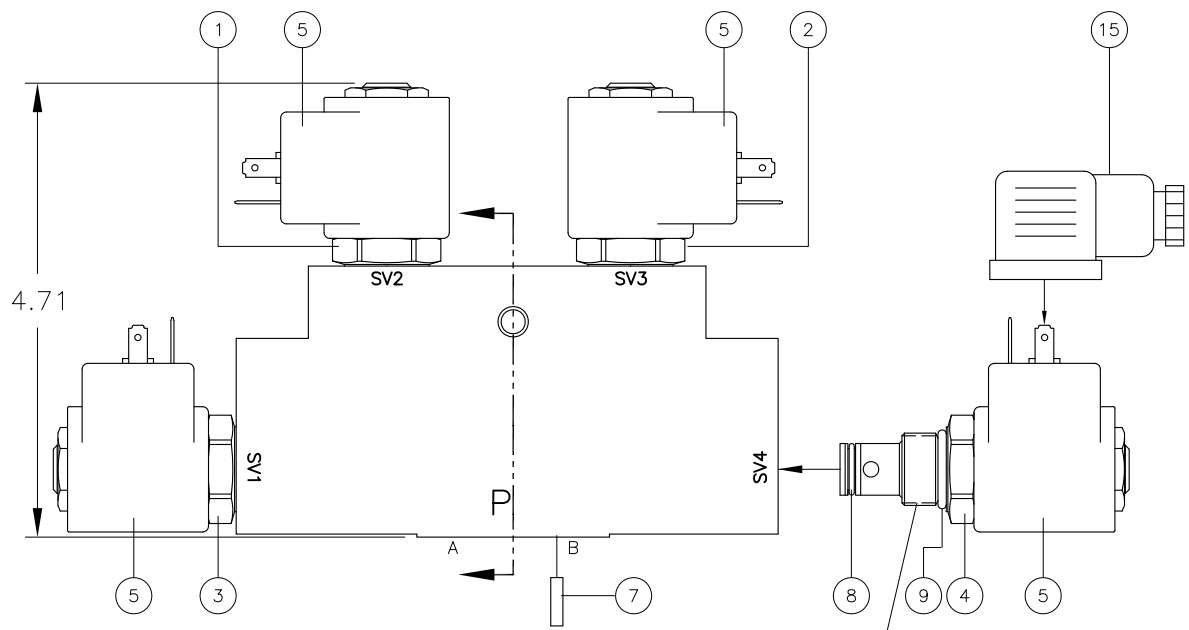
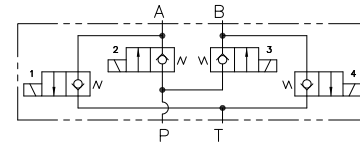
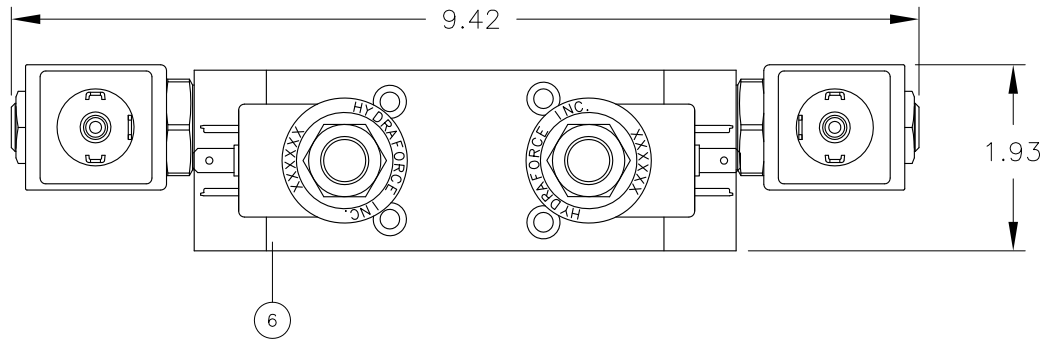
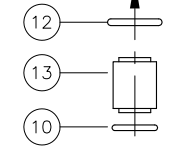
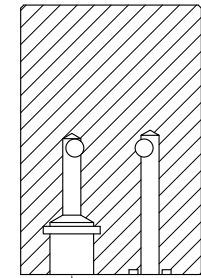


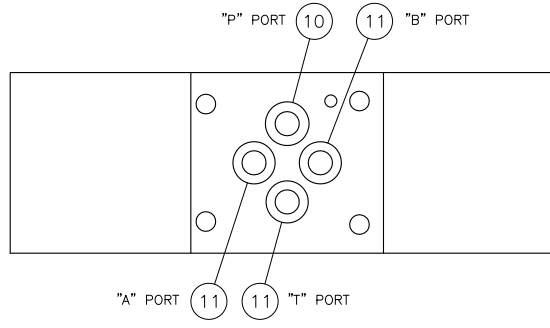
REV	DESCRIPTION	BY	DATE
A	PICTURE CHANGE (C'BORES)	WNI	11/22/04
B	ADDED SHT 2	WNI	1/25/11
C	RELABELED SOL NMG; ADDED NEW ISO SYMBOL	WNI	5/17/11
D	PICTURE CHANGE NEW SYMBOL	WNI	12/12/13



APPLY LOCTITE #242
TORQUE TO 25 FT LBS



OPTIONAL "P" PORT
CHECK VALVE INSERT



VOLTAGE	SOL P/N	SEAL MATL	SEAL CODE
24 VDC	11403 M03-1018	EPR	E90
		VITON	M83248
		POLYURETHANE	9250
115 VAC	11404 M03-1018	EPR	E90
		VITON	M83248
		POLYURETHANE	9250
230 VAC	11405 M03-1018	EPR	E90
		VITON	M83248
		POLYURETHANE	9250

15	REF 10311	M02-1003	CONNECTOR, DIN 43650
14	REF 10697		CHECK VALVE, -04
13	1	10958 V03-5003	INSERT
12	1	SO-013-B70	O-RING
11	3	SO-011-(MATL)	O-RING
10	1	8.5x1.5(MATL)	O-RING
9	4	SO-908-(MATL)	O-RING
8	4	SO-012-(MATL)	O-RING
7	1	12003	PIN, SPRING, ϕ .125 x 0.38
6	1	11470 V03-5006	BODY
5	4	(SEE CHART)	SOLENOID COIL
4	1	11398 M03-1018	2-W POPPET VALVE, NC
3	1	11398 M03-1018	2-W POPPET VALVE, NC
2	1	11398 M03-1018	2-W POPPET VALVE, NC
1	1	11398 M03-1018	2-W POPPET VALVE, NC
ITEM	QTY	PART NUMBER	DESCRIPTION

SCALE: FULL		TITLE: ASSEMBLY, 5K SOL POPPET 4-W VALVE	
DWN BY: WNI		REF: DO3-4W3P-X-X-X-X-X-C	
DATE: 11/2/04		DWG NO: V03-1004	
SHT: 1 OF 2		REV: D	