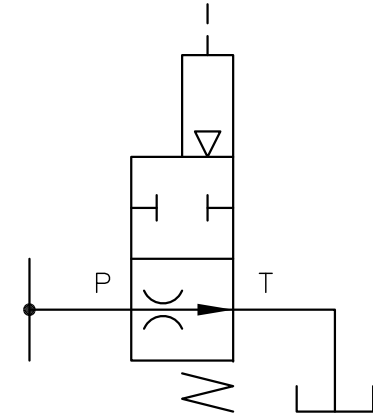
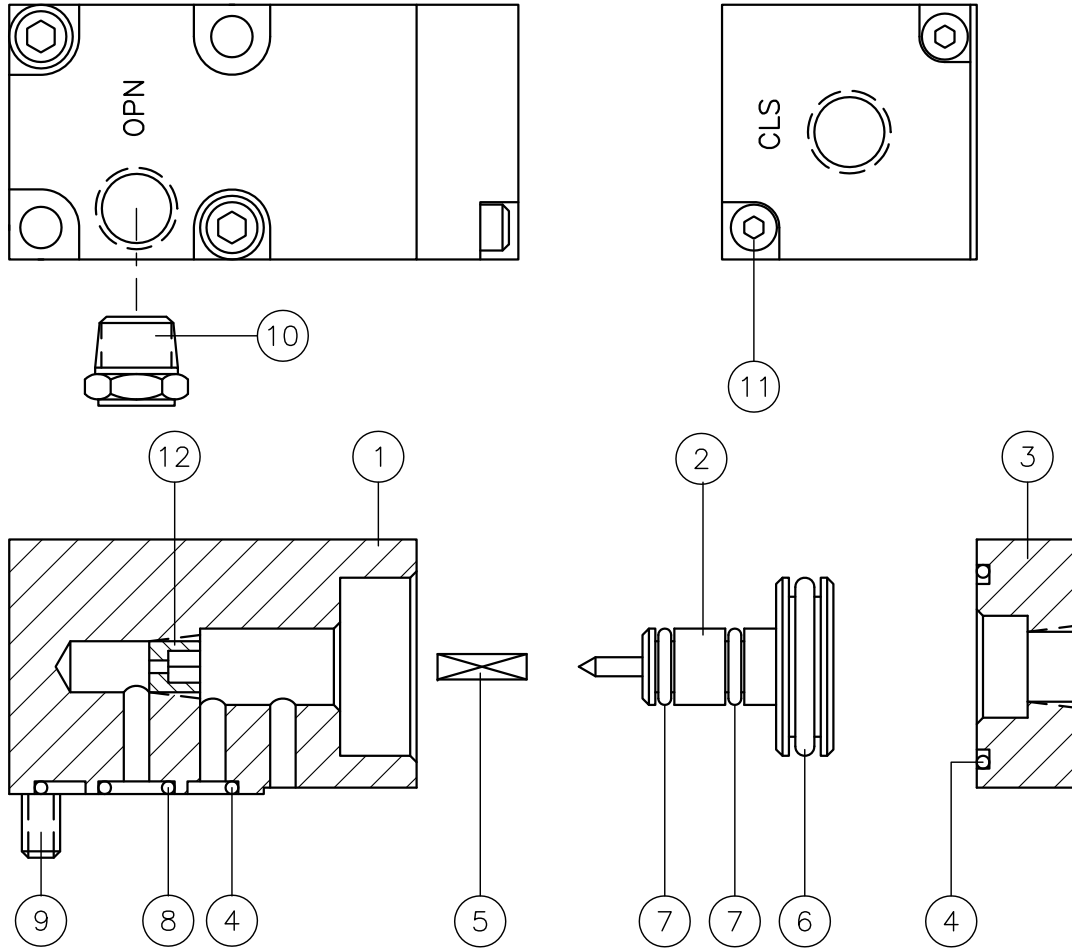


Z:\Programs\Acaddwgs\Valves\DUMP-1\V02-1001-C.DWG Plotted: Mar 11, 2013 8:43AM

REV	DESCRIPTION	DATE
A	ITEM 5 WAS FINGER SPRING #F0864-006 ADDED NEW IDI P/NS; DWG NO WAS EP-451	5/30/01
B	ITEM 5 WAS LC-024A-4	2/27/07
C	ADDED CHART & ITM 12	3/11/13



N.O. HYD SYM

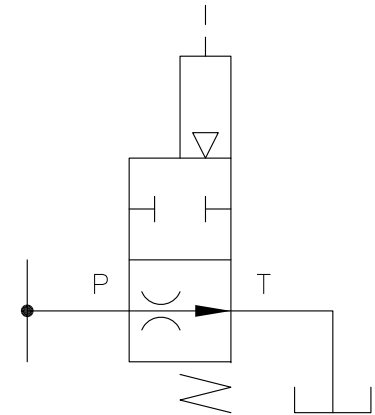
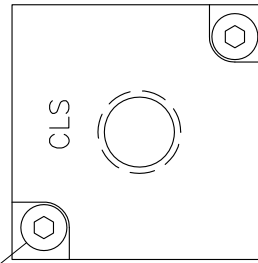
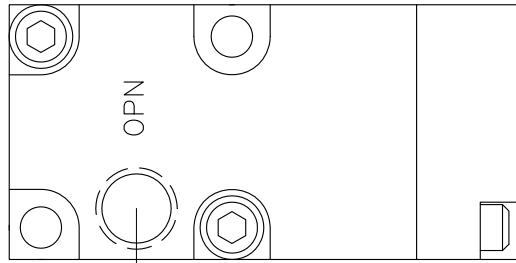
DESCRIPTION: A SUBPLATE MOUNTED, NORMALLY OPEN, ZERO-LEAKAGE, 10,000 PSI HYDRAULIC DUMP VALVE-AIR PILOT OPERATED (65 PSI MIN).

12	1	SEE CHART	ORIFICE PLUG
11	2	6-32 x .50	SCREW, SOC HD CAP
10	1	10264	BREATHER, 1/8 NPT
9	2	10-24 x .88	SCREW, SOC HD CAP
8	1	SO-010P9	O-RING
7	2	SO-010B7	O-RING
6	1	SO-115B7	O-RING
5	2	10660	COMPRESSION SPRING
4	2	SO-020B7	O-RING
3	1	10284 V02-5002	CAP
2	1	10538 V02-5004	PISTON/NEEDLE
1	1	10113 V02-5001	HOUSING
ITEM	QTY	PART NUMBER	DESCRIPTION

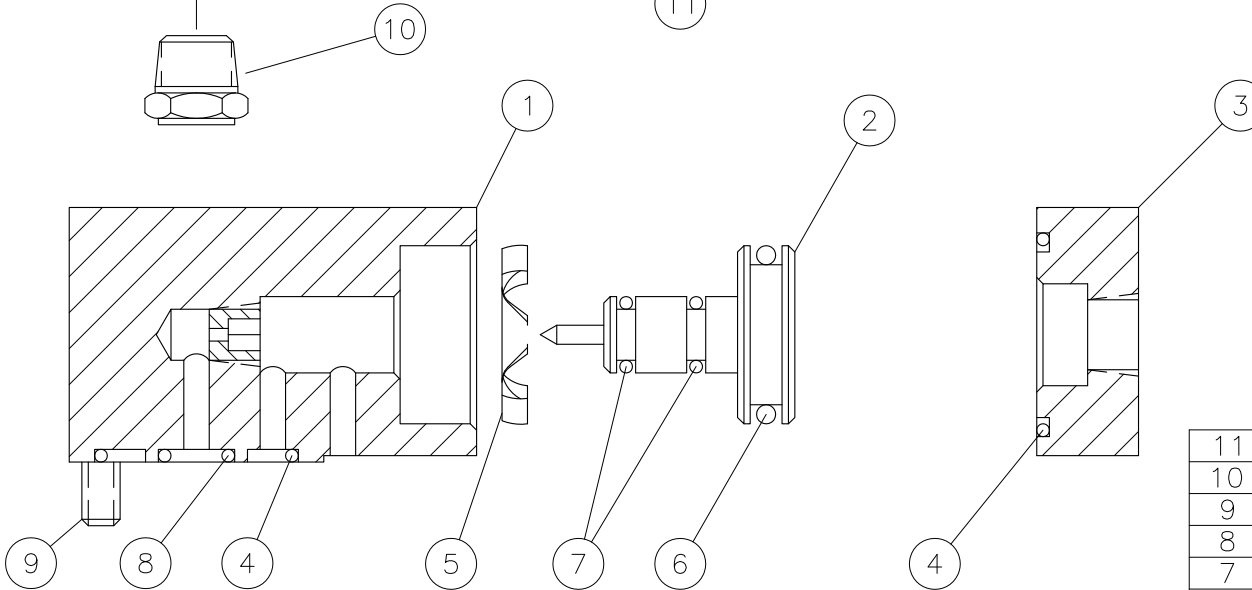
(STD)	ASSEMBLY PART NO	ORIFICE	ITM 12 P/N
	10029	.046	10444
	10027	.062	10446

		INTERFACE DEVICES, INC. 230 DEPOT ROAD MILFORD, CT 06460	
SCALE: FULL	TITLE: DUMP VALVE ASSY (NORMALLY OPEN)		
DWN BY: TWH			
DATE: 5/12/93	REF:		
SHT: 1 OF: 1	DWG NO: V02-1001	REV: C	

File Name: Z:\Programs\Acaddwgs\Valves\DUMP-1\V02-1001-0.DWG



NO HYD SYM



11	2	6-32 x .50	SCREW, SOC HD CAP
10	1	10264	BREATHER, 1/8 NPT
9	2	10-24 x .88	SCREW, SOC HD CAP
8	1	SO-010D7	O-RING
7	2	SO-010B7	O-RING
6	1	SO-115B7	O-RING
5	1	F0864-006	FINGER SPRING
4	2	SO-020B7	O-RING
3	1	10284	CAP
2	1	10538	PISTON/NEEDLE
1	1	10113	HOUSING & SEAT
ITEM	QTY	PART NUMBER	DESCRIPTION

DESCRIPTION: A SUBPLATE MOUNTED, NORMALLY OPEN, ZERO-LEAKAGE, 10,000 PSI HYDRAULIC DUMP VALVE-AIR PILOT OPERATED (65 PSI MIN).

ASSEMBLY PART NUMBER 10029

		INTERFACE DEVICES, INC. 230 DEPOT ROAD MILFORD, CT 06460	
SCALE: FULL	TITLE: DUMP VALVE ASSY (NORMALLY OPEN)		
DWN BY: TWH			
DATE: 5/12/93	REF:		
SHT: 1 OF: 1	DWG NO: EP-451	REV:	